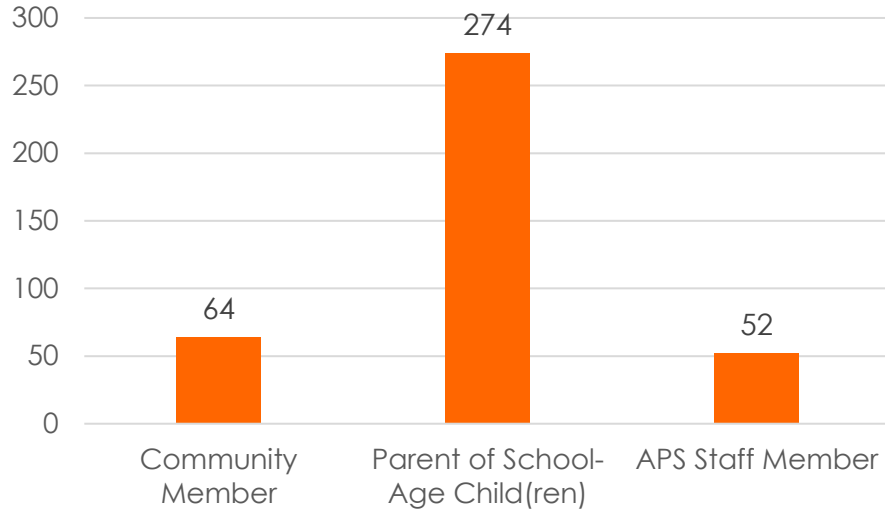
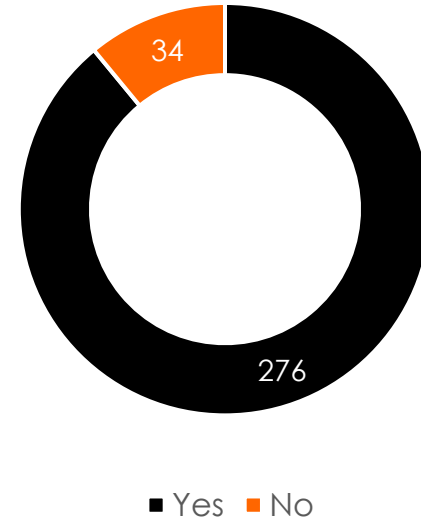


Community Survey #1 Results

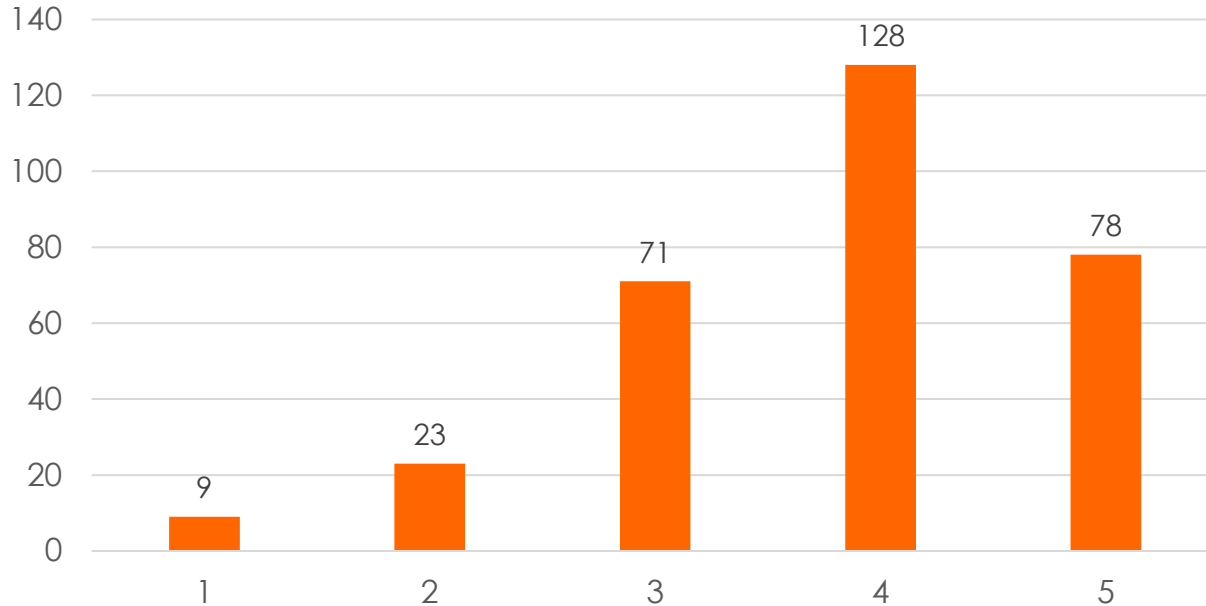
I'm taking this survey as (check all that apply):



Do you currently have children attending Allegan Public Schools?

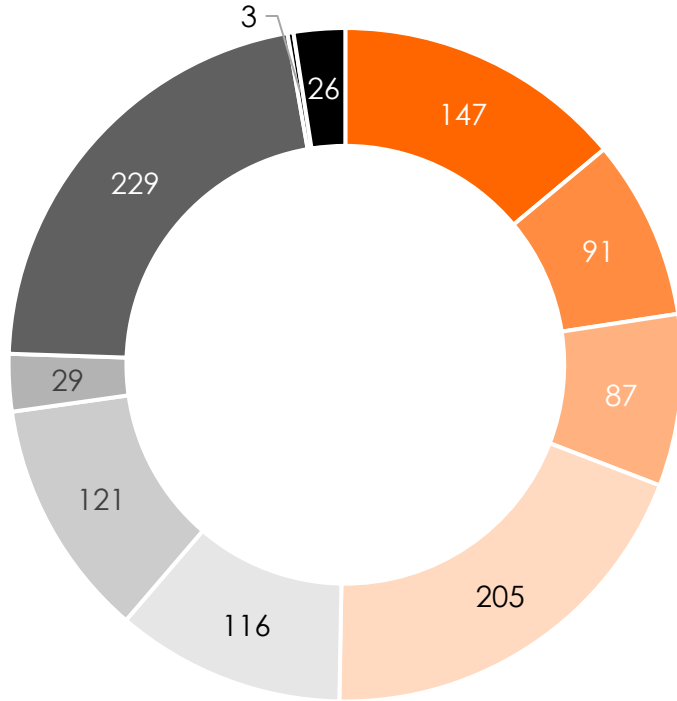


How informed do you feel you are about the on-goings at Allegan Public Schools?



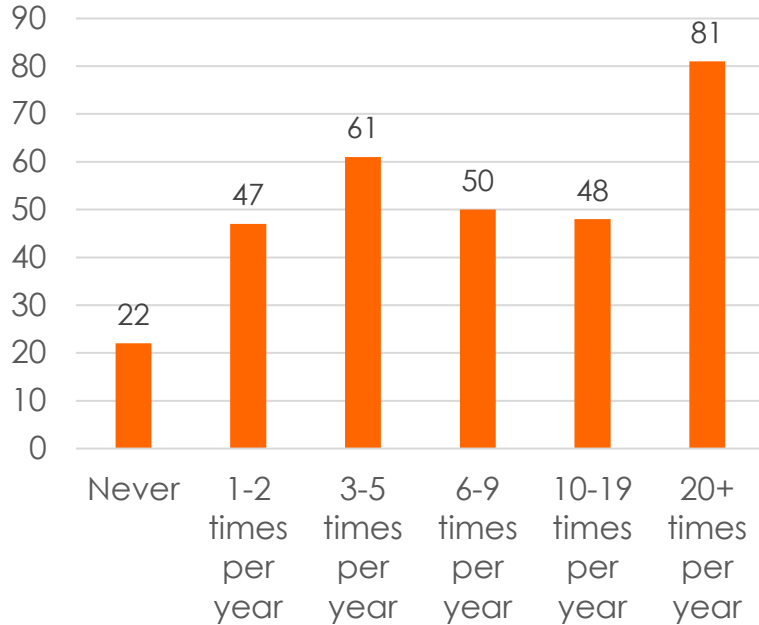
Scale of 1 (not informed) to 5 (extremely informed)

How do you receive information about Allegan Public Schools (check all that apply)?:

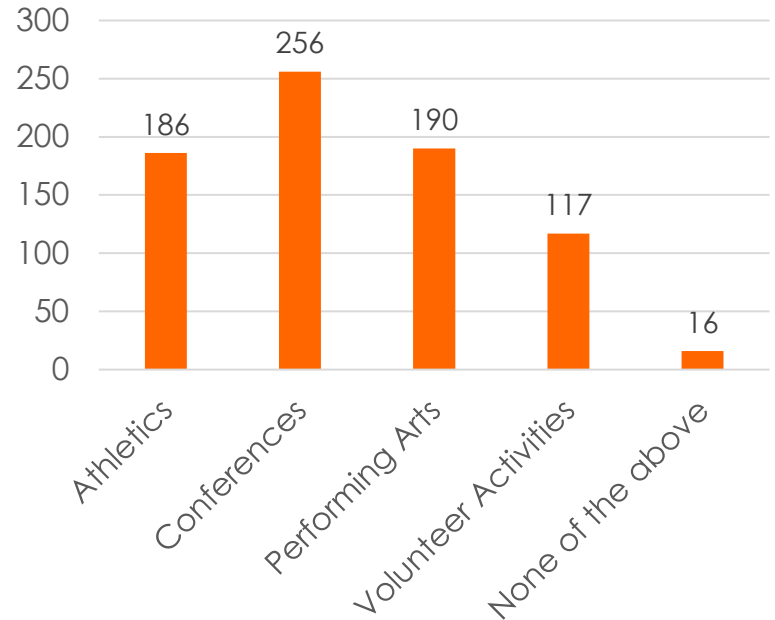


- District Newsletter
- Newsletter from Teachers
- School Building Newsletters
- Social Media
- Word of Mouth
- District Website
- Newspaper/Media
- School Messenger/Text Messenger
- I don't
- Emails

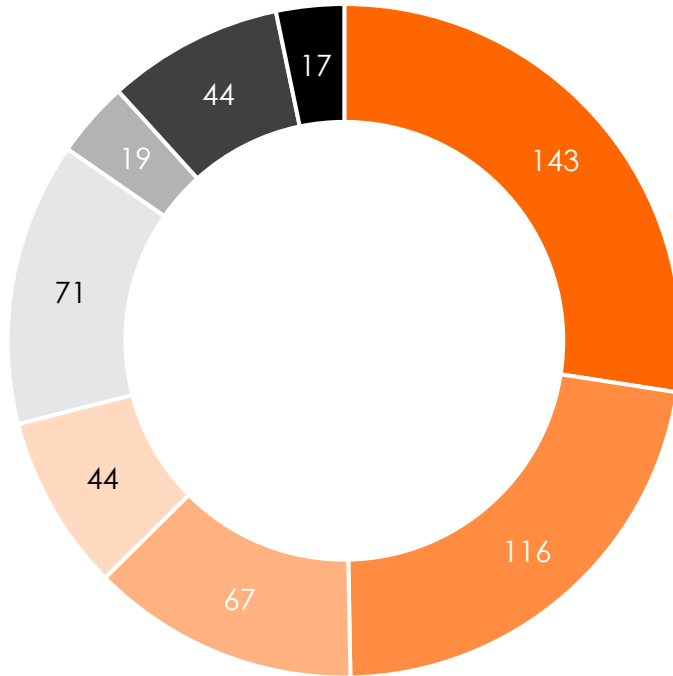
How often do you attend function sat Allegan Public Schools facilities?



What types of events do you attend (check all that apply)?

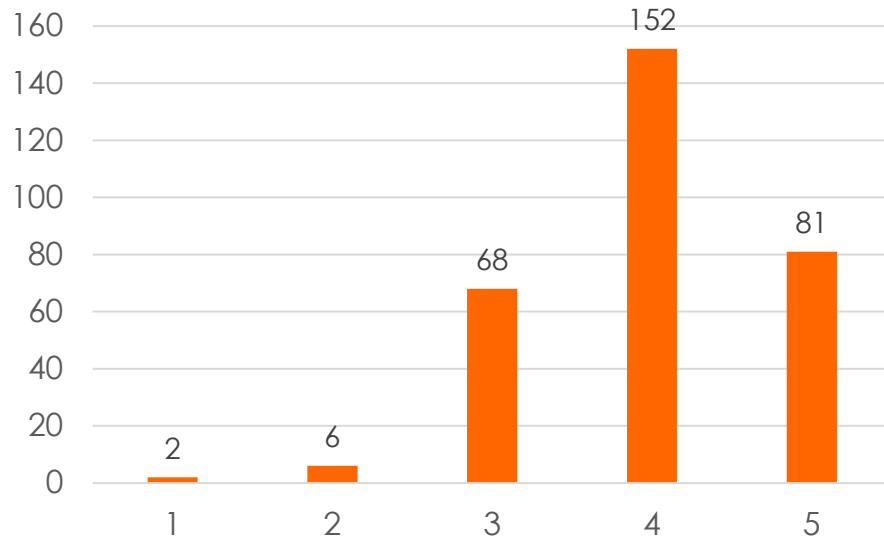


Please select the building(s) which your child(ren) currently attend or did attend (check all that apply):



- Allegan High School
- L.E. White Middle School
- Dawson Elementary
- Pine Trails Elementary
- West Ward Elementary
- Early Childhood Center
- Allegan Online/Adult Education
- N/A

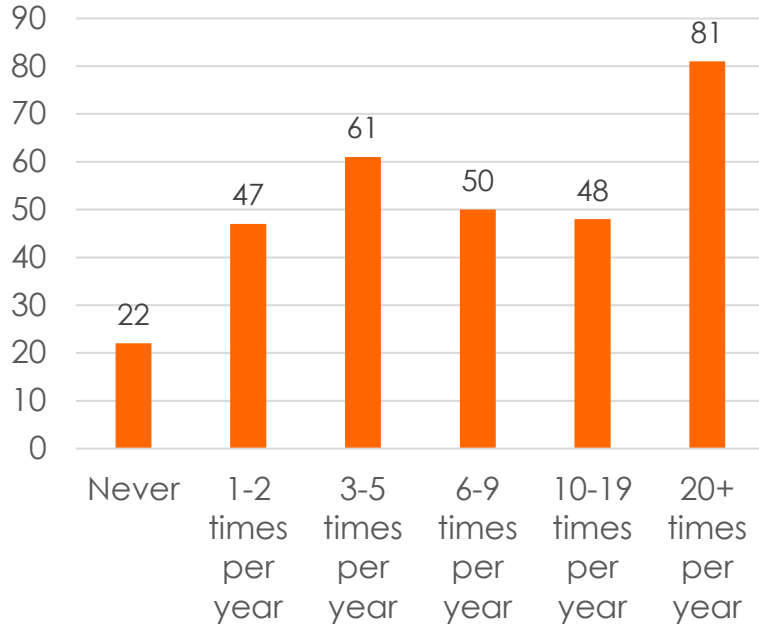
Please rate the academic facilities:



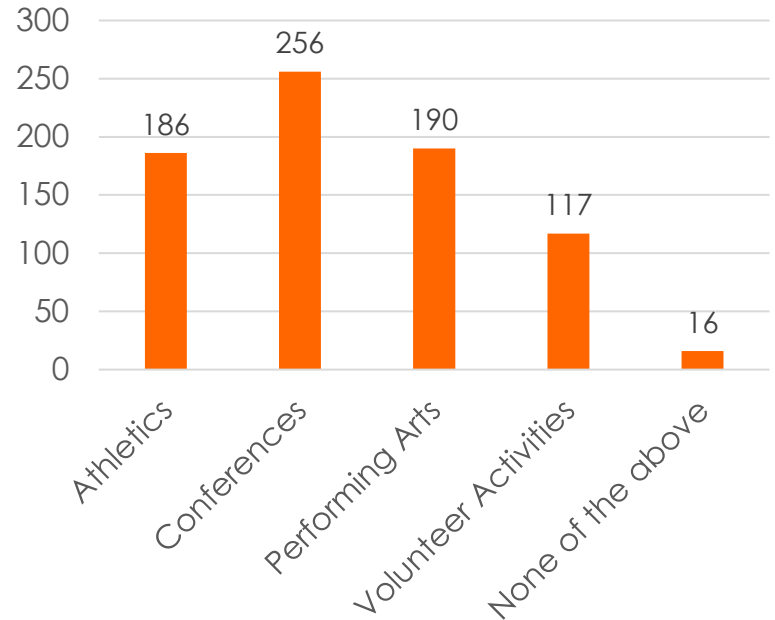
Scale of 1 (unacceptable/unsafe) to 5 (excellent)

- “They are not unsafe but could definitely use updates.”
- “Some technical updates but the building is still very similar to when I attended there almost 30 years ago.”
- “Roof leaks seemed like a constant battle in elementary buildings especially. Having no AC in halls and gyms makes for uncomfortable environments for students and staff.”
- “Other schools are designed in such a way that all classrooms have windows and natural light for kids to see throughout the day. Expect for 6th grade, it’s possible 7th and 8th graders don’t see the sun except for lunch time.”

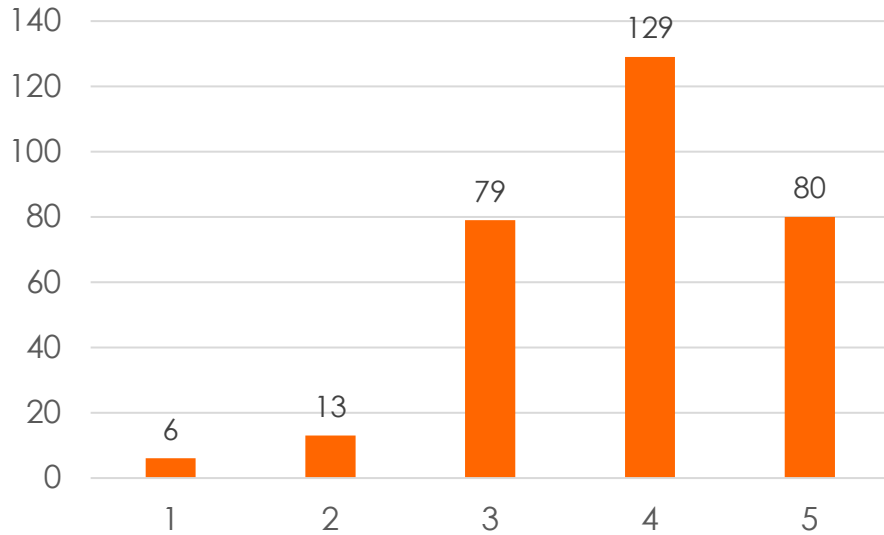
How often do you attend function sat Allegan Public Schools facilities?



What types of events do you attend (check all that apply)?



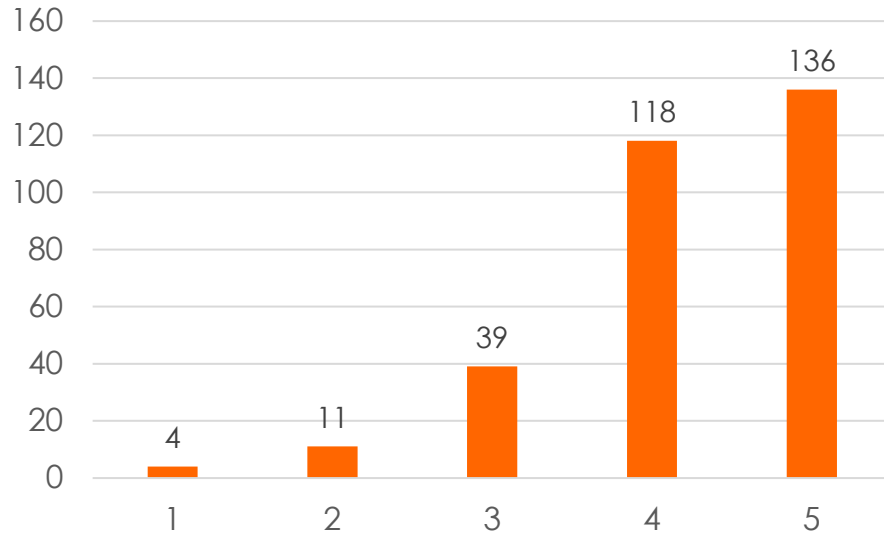
Do you believe that the APS learning facilities benefit the entire community:



Scale of 1 (unacceptable/unsafe) to 5 (excellent)

- “We need to offer students a safe and consistent learning environment that is going to help lead them to strong abilities to lead independent lives. The pool is open to the community and the sports are fun entertainment and great team building for kids.”

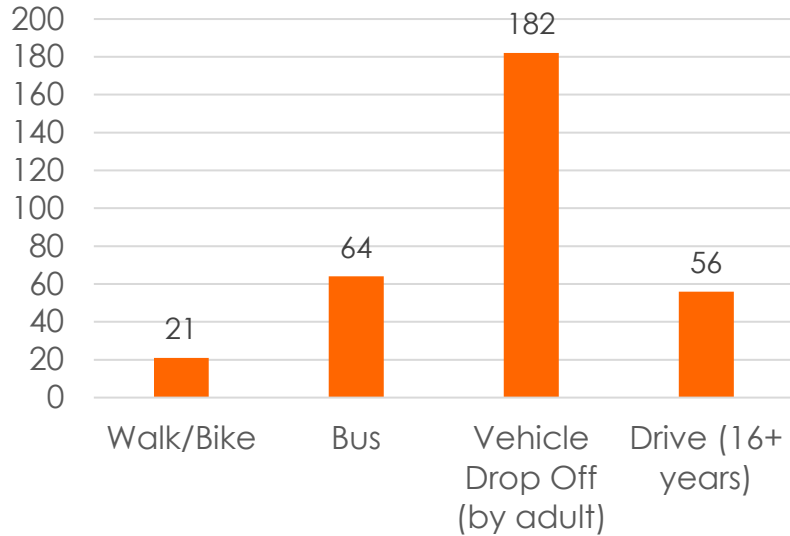
Do you feel that APS provides a safe and secure school environment?



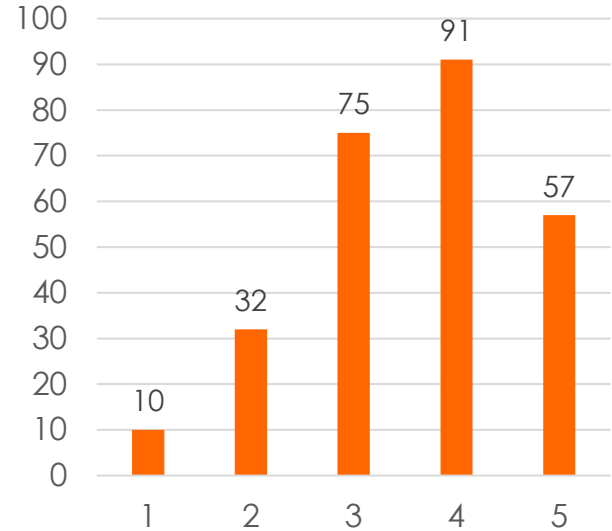
Scale of 1 (unacceptable/unsafe) to 5 (excellent)

- "I feel the inside of the schools are doing a great job of security. The outside, like playgrounds, before school drop off and after school pick ups are not safe at all."
- "Drop off and pick up some days can be a bit scary at LE White. Kids do not always pay attention and run in front of cars."
- "Bad idea having crosswalk in front of L.E. White to high school with traffic coming and going. Kids should be using sidewalks west to high school and crossing at a different location."
- "The high school main entrance needs to be redesigned and pool access as well to keep competition participants from having access to the entire school building and classrooms."

How does your child(ren) get to school each morning?

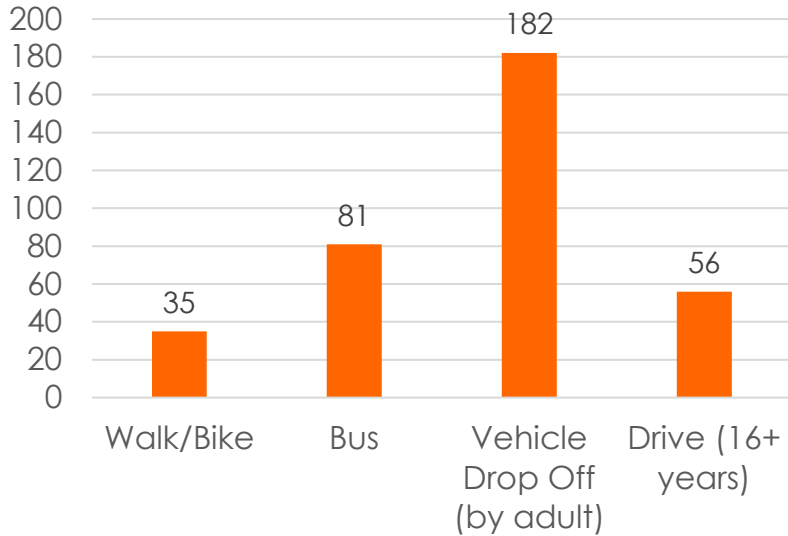


Please rate traffic flow and parking during morning drop off.

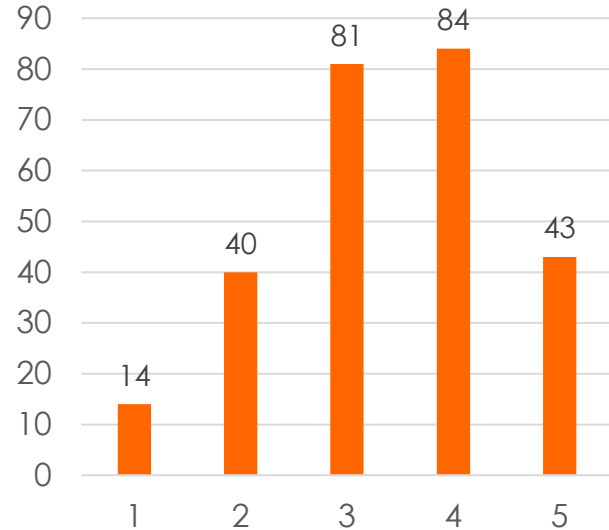


Scale of 1 (unacceptable/unsafe) to 5 (excellent)

How does your child(ren) leave school each afternoon?



Please rate traffic flow and parking during afternoon pick-up.



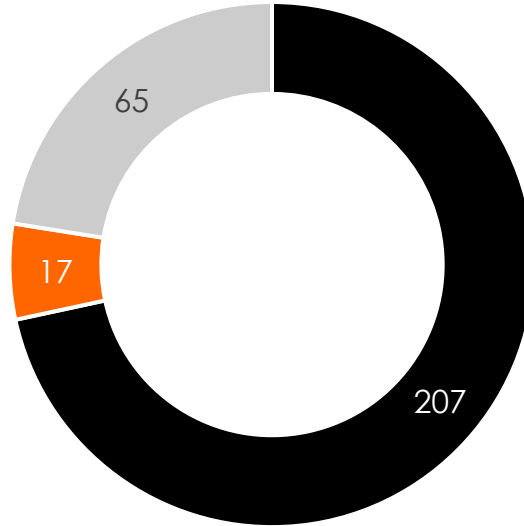
Scale of 1 (unacceptable/unsafe) to 5 (excellent)

What would the ideal pick-up/drop-off situation look like for your family?

- “Cars exiting have difficulty leaving especially with kids crossing cars backed up waiting for kids to cross and others to pass.”
- “Drop offs tend to be an issue mostly at the middle school and in the past with North Ward. Mostly due congestion in the drop off lanes.”
- “More parking for student pick up/drop off, lines painted for parking, possible crossing guards on school property to help students cross without fear of cars coming by too quickly.”
- “Clear defined traffic for students and drivers. Areas for picking up students should be in a separate area from where they walk to the high school.”
- “Better flow of traffic. A pick up lane that doesn't interfere with busses. Middle school primarily takes forever if you pull up to entrance for pick up. West Ward would be better if pick up out front all moved in the same direction. Traffic gets congested and busses struggle to get through.”
- “Pick up vehicles are designated to one area and have to keep moving. While buses have a separate area to enter and exit safely.”

Community Survey #1 Results

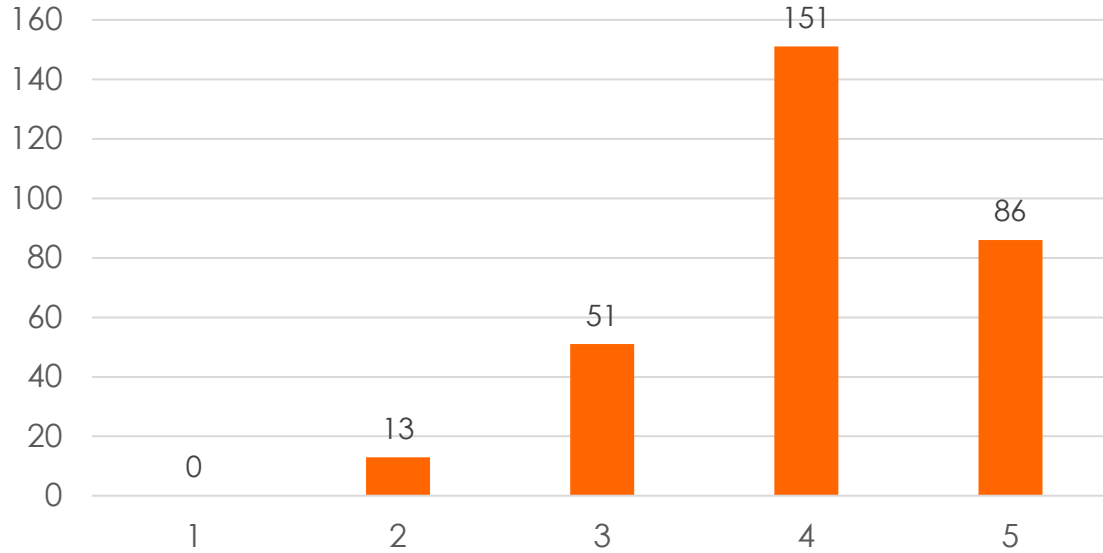
Would you support site improvements to address pedestrian and vehicle traffic challenges?



■ Yes ■ No ■ Unsure/Need More Information

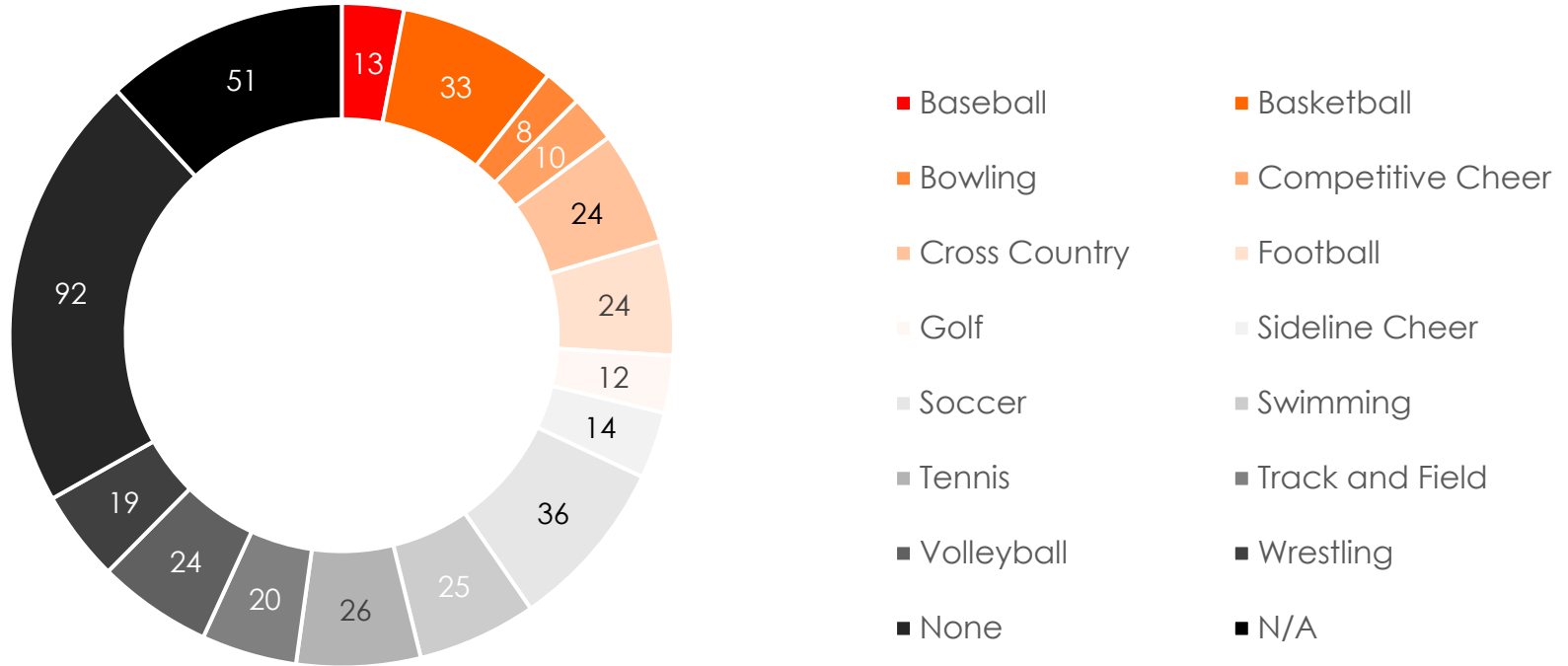
Community Survey #1 Results

Please rate the overall safety and security in the district.

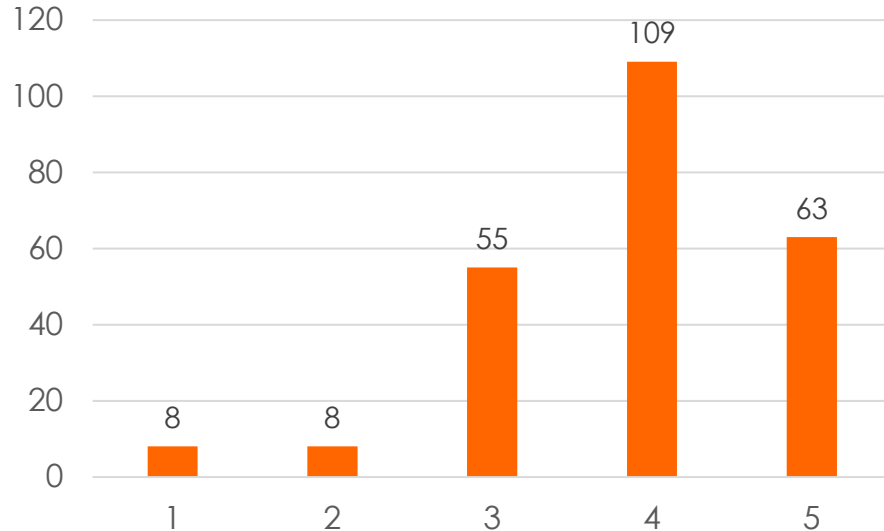


Scale of 1 (unacceptable/unsafe) to 5 (excellent)

Does your student participate in APS Athletics (check all that apply)?:



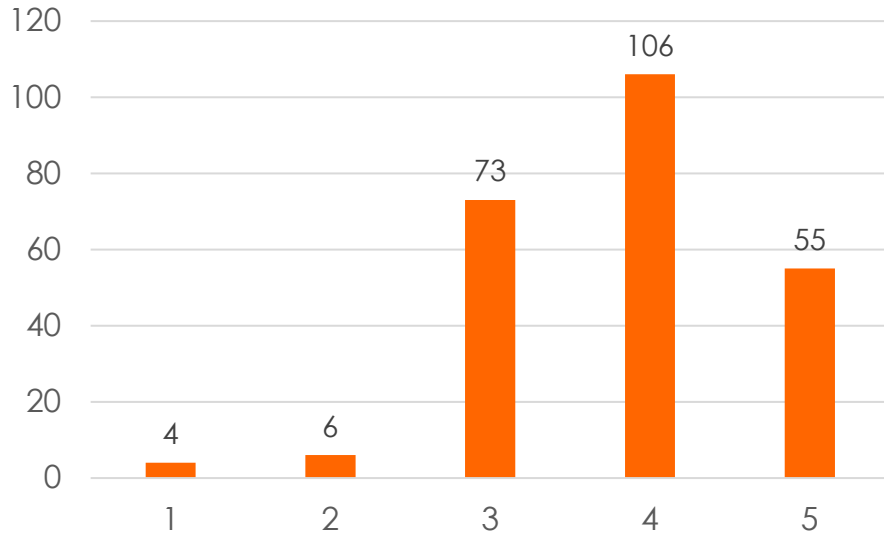
Please rate the athletic facilities.



Scale of 1 (unacceptable/unsafe) to 5 (excellent)

- “Need to update/have locker room space at the fields. Keep competitors entirely separate.”
- “The tennis courts are horrible. It is dangerous to play on courts 1-4. The cracks in courts 5-8 keep getting bigger. You are at a point where they need to be dug up and replaced... Also, the sharp turns of the track have been damaging to people's knees. It's not a good place to run. I know my mom was told to stay away after knee surgery... The pool deck is sometimes not large enough for the number of swimmers on deck...Also, the seating area is not big enough. Because you don't have seats built in, people spread out and then there aren't enough seats for all spectators. Quite often, I think we would be shut down if a fire marshall showed up.”
- “Turf on the football field would be nice for marching band and other events.”

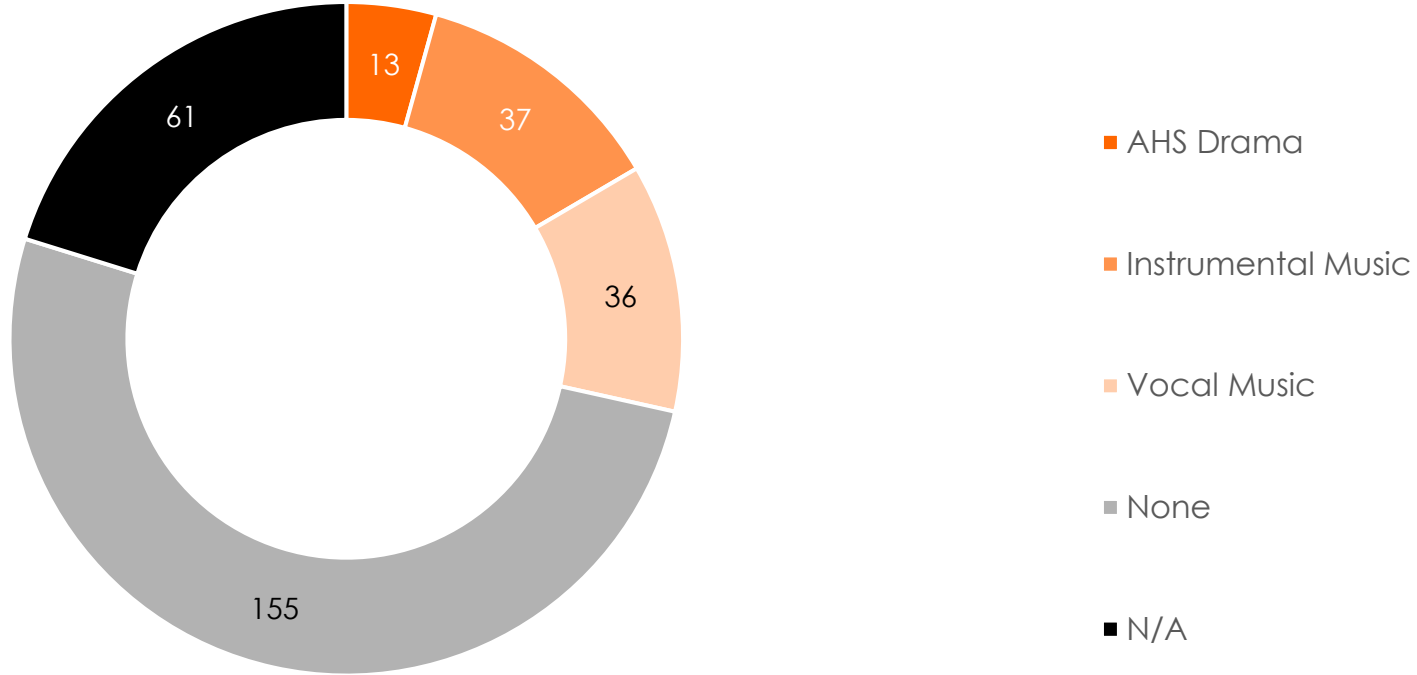
Please rate the spectator accommodations at athletic events.



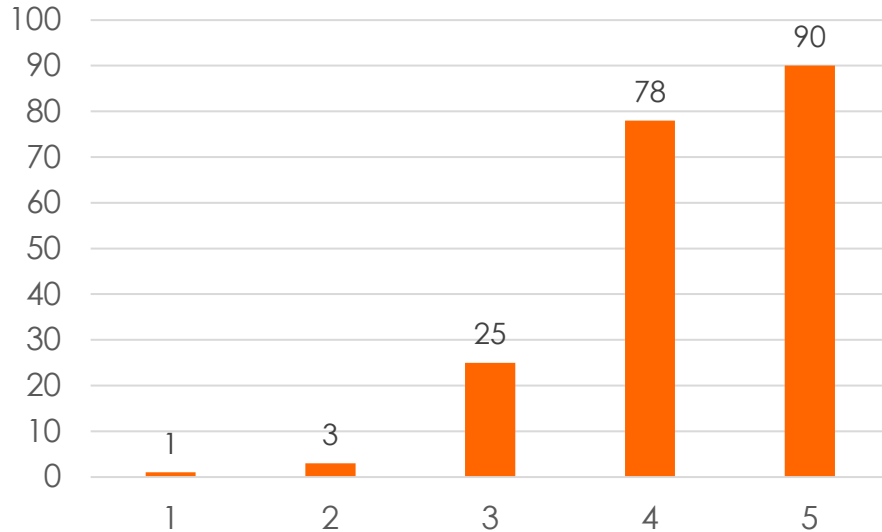
Scale of 1 (unacceptable/unsafe) to 5 (excellent)

- “The seating feels incomplete in the pool like it needs a bench for seating at the front of the stairs so there is room for feet under the bench. The football stadium is great for spectators as is the gym (the lighting could be improved to have it be more natural).”

Does your student participate in APS Arts Programs (check all that apply)?:



Please rate the arts facilities.

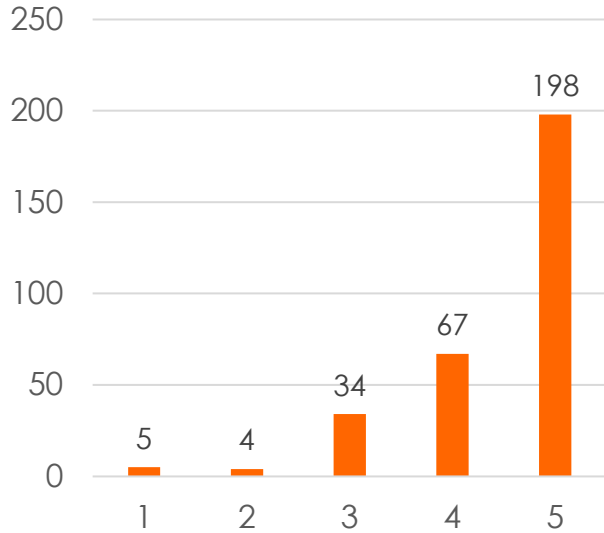


Scale of 1 (unacceptable/unsafe) to 5 (excellent)

- “The upper balcony is concerning for young children. Need better guard rails.”
- “I know the audio needs to be updated in the auditorium. APS was told a few years ago they had to update the system to be compliant with regulations, and it was not done and is now not compliant. I also know that there are some things in the auditorium that need fixing, too. The space itself is beautiful and I love it.”
- “Adequate seating. Crowded/congested access to the auditorium during events.”
- “It is sometimes difficult for handicapped.”

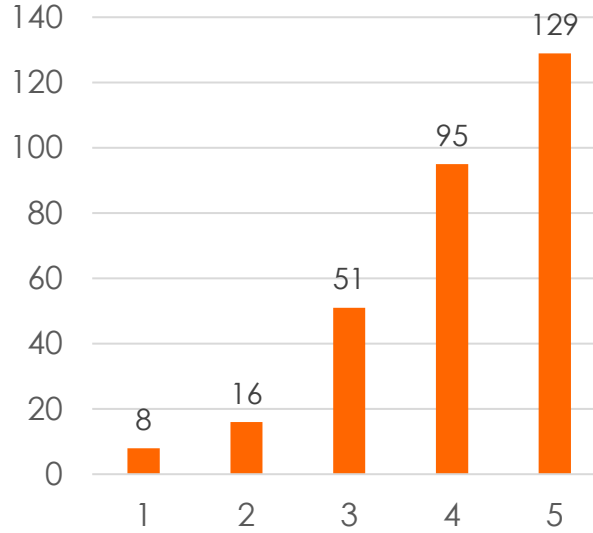
Community Survey #1 Results

Please rate the importance of technology to the learning experience of students.



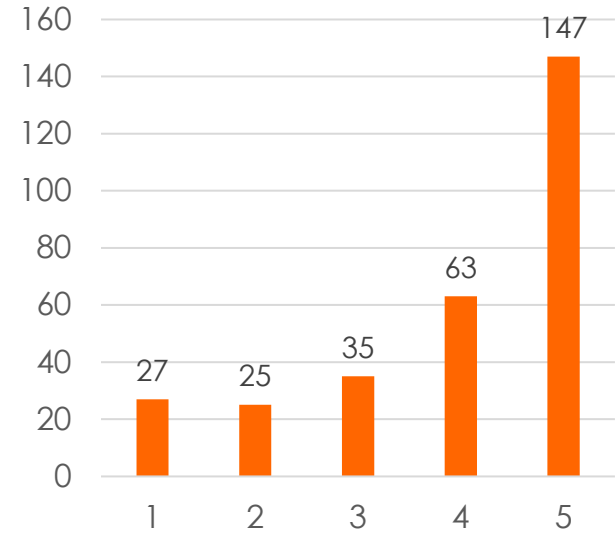
Scale of 1 (not important) to 5 (extremely important)

Do you believe your student(s) has good access to technology at school?



Scale of 1 (strongly disagree) to 5 (strongly believe)

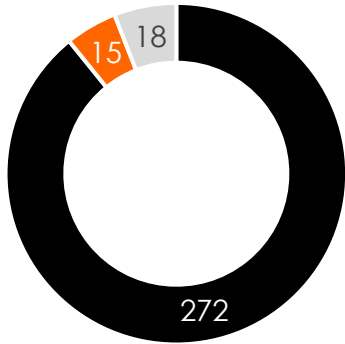
Do you believe your student(s) has good access to technology at home?



Scale of 1 (strongly disagree) to 5 (strongly believe)

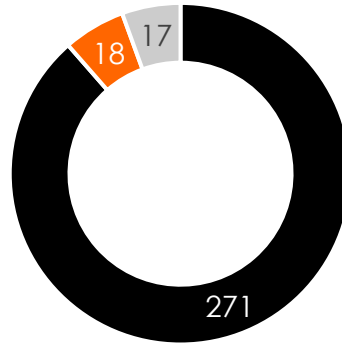
Community Survey #1 Results

Would you support the replacement of outdated computers and tablets to support the needs of the curriculum?



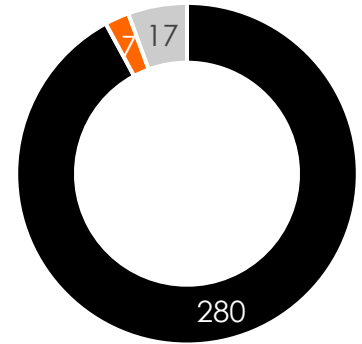
■ Yes ■ No ■ NA

Would you support the purchase of additional computers and devices to increase student accessibility?



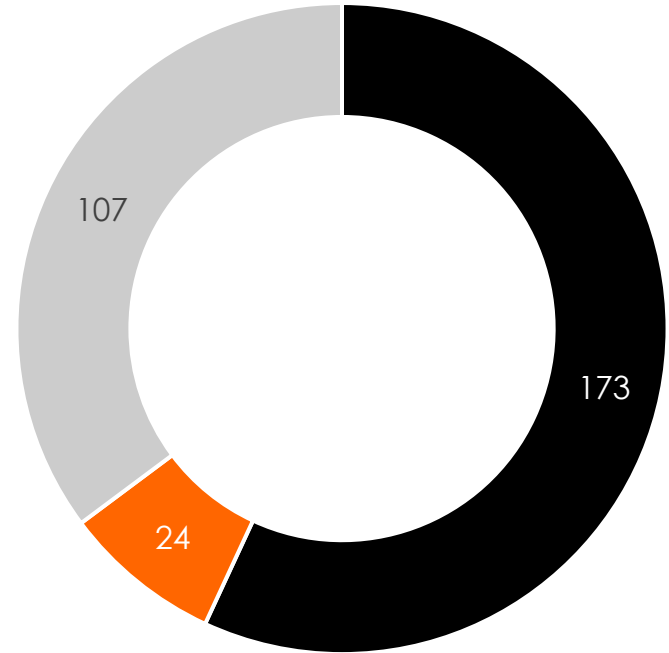
■ Yes ■ No ■ NA

Would you support upgrading technology infrastructure to increase accessibility to WIFI?



■ Yes ■ No ■ NA

District Administration and the Board of Education are studying the possibility of a school bond proposal in order to address district needs. A bond proposal allows the voters of a school district to authorize the public school district to borrow money for capital expenditures by selling bonds. Proceeds can be invested in new construction, additions, remodeling, site improvements, athletic facilities, playgrounds, furnishings, equipment, and technology – typically items that cannot be paid for with the general fund. Funds generated by a bond issue cannot be used for district employee salaries. No decisions have been made. However, based on the information provided, do you believe that the district's site and facility needs warrant a bond proposal?



■ Yes ■ No ■ Unsure/Need More Information

- It seems hard to know how to comment on improvements for a program that is not fully operating at this time.
- L.E. White middle school needs remodeled and enlarged.
- Safety and security should be #1 followed by educational opportunities, facilities upgrades/maintenance including the performing arts facility, and athletic facility improvements.
- Are we looking at restructuring our Elementary buildings and moving to 1 building?
- Since enrollments have drop over the years, to have one K-5 building to house all students would be great.
- I am glad that the Board of Education is not using a "its good enough" approach to keeping facilities and learning environments up-to-date.
- Please be open and honest about this process and the project itself . I feel that so many things have been sprung on parents/staff members.
- I would like additional information on the expenditures of our previous bond.
- To truly form an educated opinion, I would need to know what technology the other buildings are lacking that warrants a bond issue, and what exactly would make the buildings safer.
- Administration need to observe facilities from other districts that have made recent improvements. Implement improvements that have data supporting learning growth and community benefit.